

## Be Warm

### BCQG Block of the Month

#### January 2015 – Block # 3

By Marsha Burns

Unfinished Block Size: 16-½" x 16-½"

Finished Block Size: 16" x 16"

#### Supplies:

17" x 17" Background Fabric is cut larger to accommodate for applique shrinkage (It will be trimmed to 16-½" x 16-½")

Assorted Fabric Scraps:

Pink for Mittens

White for Snowflake

Red for Bird

Dark Blue for Letters

White for Mitten Cuffs

Red for Flower Petals

Yellow/Gold for Flower Centers

Embroidery thread or Floss (used 2 strands) for Mittens' Cord

#### Directions:

Trace the applique pieces using the templates onto paper-backed Fusible Web (Heat and Bond Light was used). Or use your favorite applique method (e.g., needle turned, raw edge, freezer paper, etc.).

**Please note that pattern pieces are reversed for using with paper-back Fusible Web.** Following the manufacturer instructions, apply the paper-backed Fusible Web onto the wrong side of each fabric. Cut on the drawn line.

Place the prepared applique pieces onto the background fabric referring to the picture for placement.

Ensure that pieces fit within a 15-½" x 15-½" area.

Stitch applique edges using your favorite decorative stitch or straight stitch works well also.

Embroider the mittens' cord with floss using backstitch.

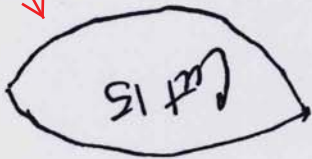
Square Block 16-½" x 16-½".



MITTEN CUFF  
Cut 2 - White

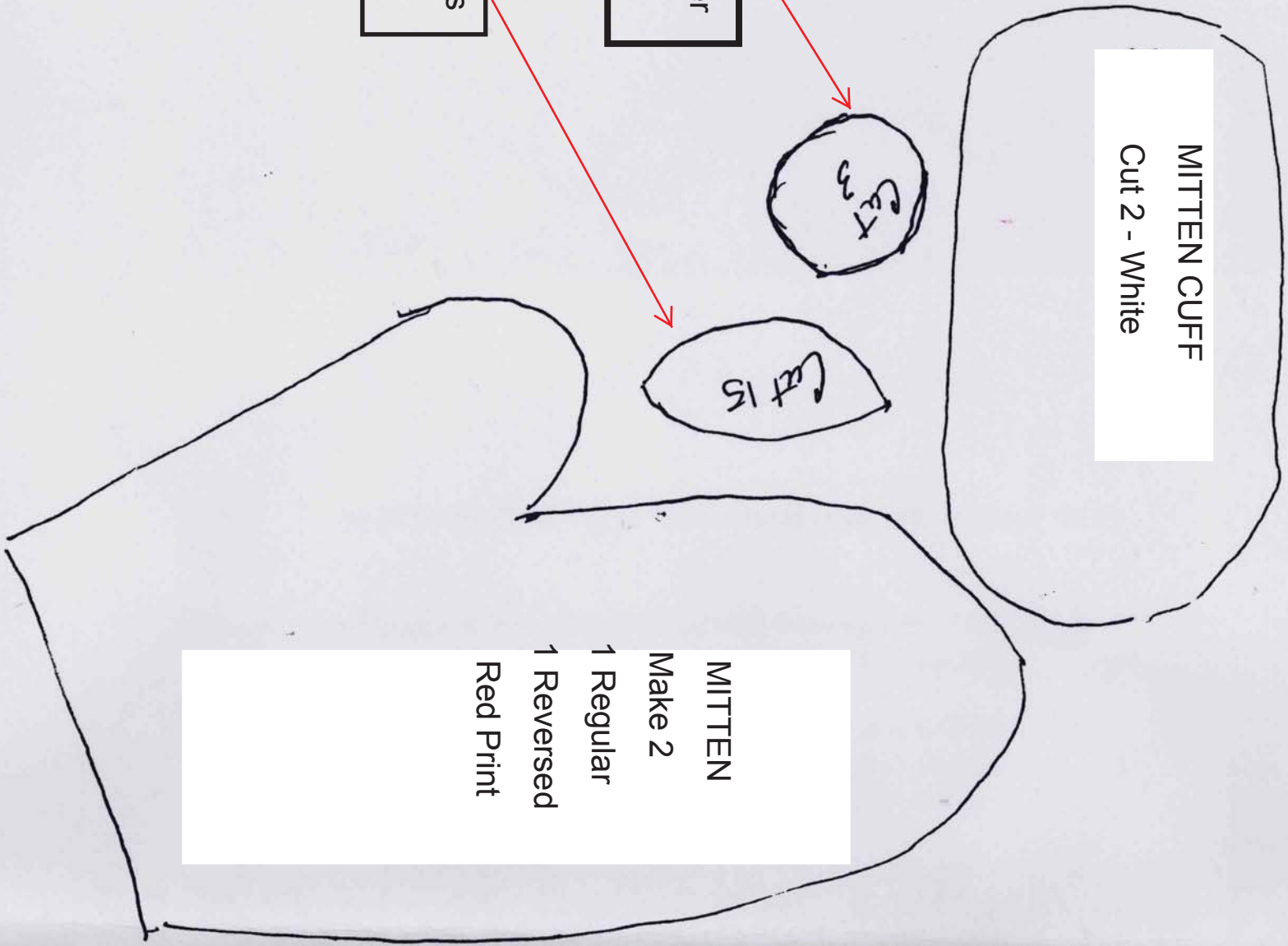


Flower Center  
Yellow

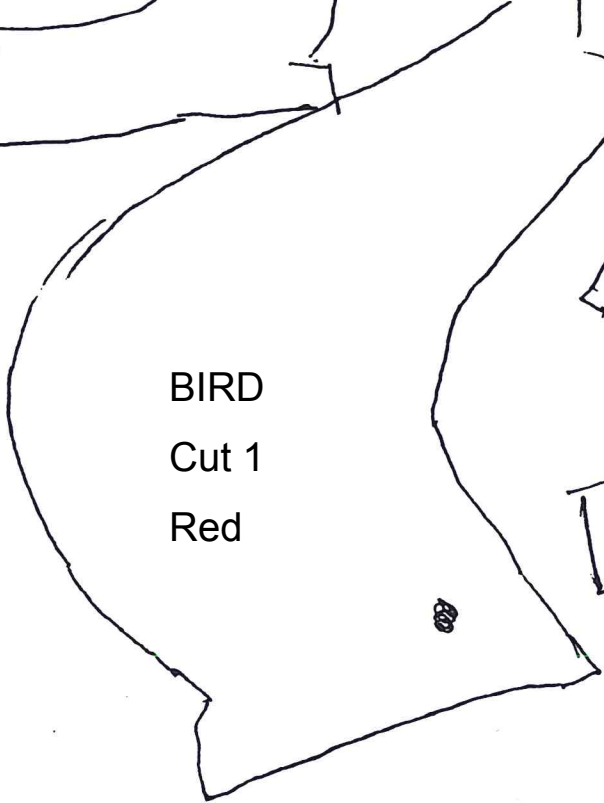
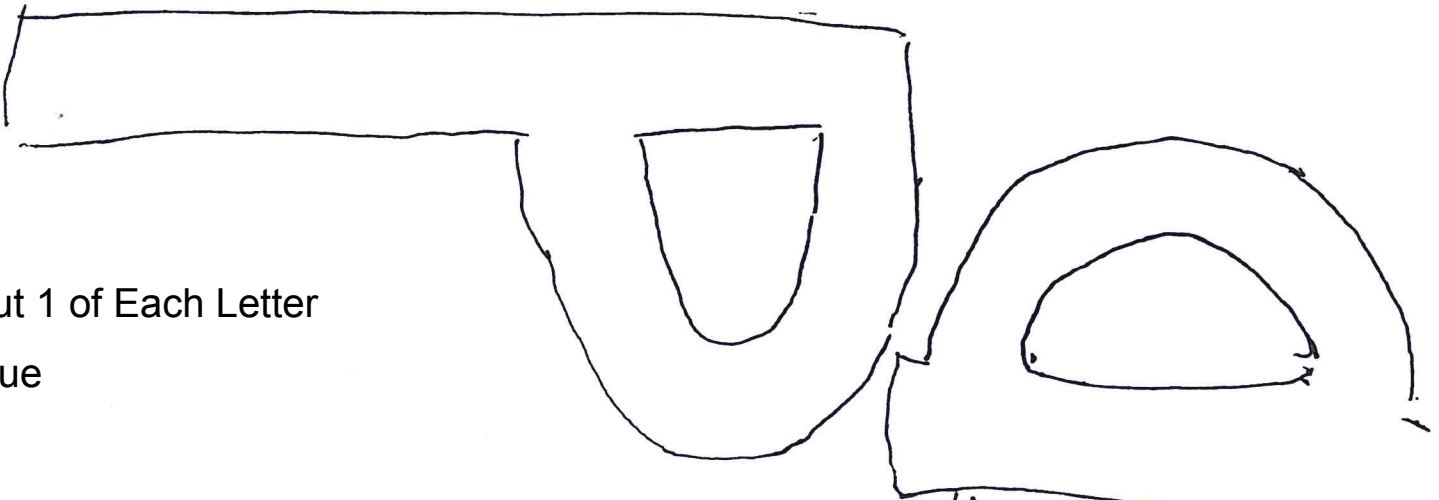


Flower Petals  
Red

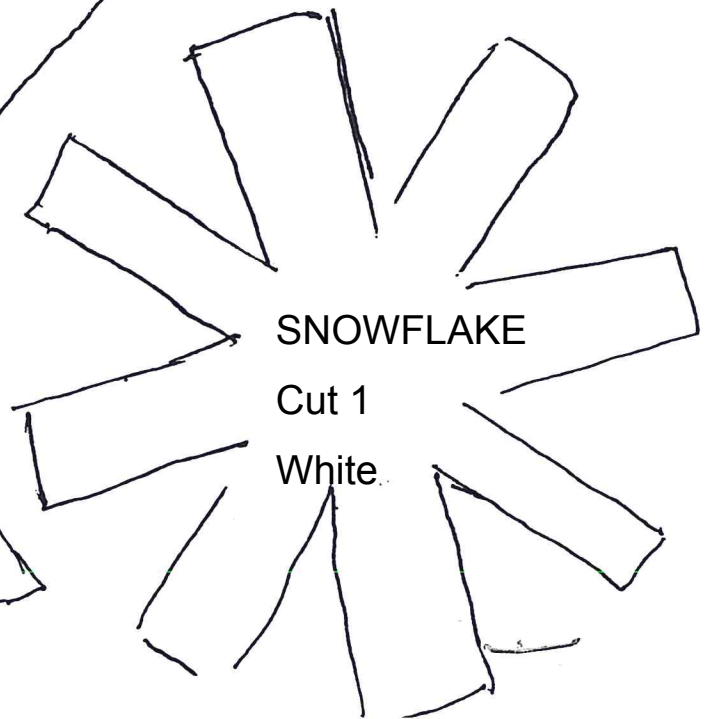
MITTEN  
Make 2  
1 Regular  
1 Reversed  
Red Print



Cut 1 of Each Letter  
Blue



BIRD  
Cut 1  
Red



SNOWFLAKE  
Cut 1  
White