

November 10, 2017
Teacup Workshop
<http://SandraBruce.com>

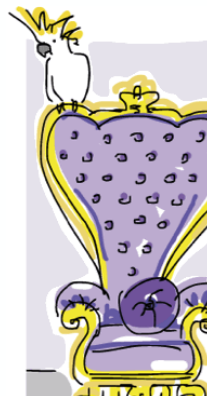
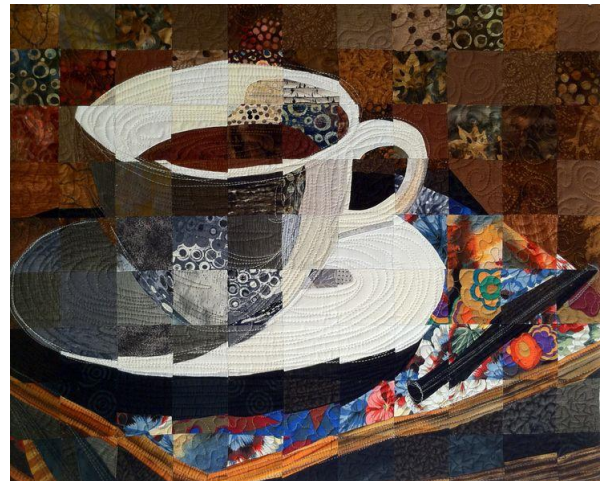


Born in Richmond, Va. to deaf parents, Sandra was raised to believe she could do anything she put her mind to. She never heard "you can't make a living as an artist". She thanks her parents, Frank and Charlotte Bruce for

Like many women, she began her love of sewing at about age 8 when her mother taught her to use the treadle sewing machine. She got her own machine as a teenager and never stopped sewing. In 1988, while living in the San Francisco Bay Area, she started a quilting "bee" with quilt artist Therese May and discovered the fun of working on collaborative projects. After moving to the Sierra Foothills in 1990, She took her first official quilting class and has been forever hooked.

She began her quilting business in the fall of 2010 to combine her love of illustration, lettering and quilting. She has been an illustrator and letterer for 35 years, and long arm quilting is really just doing what she'd been doing for many years, but with a different tool. She loves incorporating writing into her quilting, and "drawing" images that echo the motifs in the fabrics.

She lives in Grass Valley, California with Gary, her partner of 34 years, and their teenaged son, Matteo. My Gammill, a 14-foot long arm machine named Dixie, is located in her quilting studio in historic downtown Grass Valley. She belongs to the Pine Tree Quilt Guild, Artistic Alchemy, SAQA (Studio Art Quilt Associates) as a JAM member, Southern California Quilt Council, and the Northern California Quilt Council.



She teaches workshops and classes, see her website at <http://sandrabrauce.com> for more info. She finds teaching very rewarding and loves sharing her knowledge of quilting: Material Matrix, Color Dance, and Stitching Words. There are resources where you can read about her work and see more photos too.